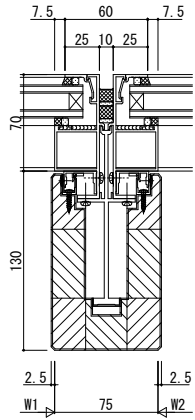
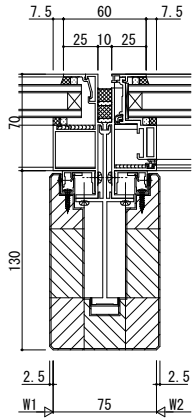


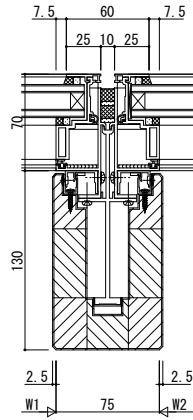
●FIX窓/FIX窓



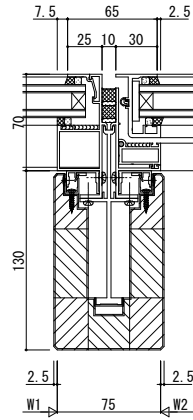
●FIX窓/可動窓



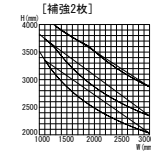
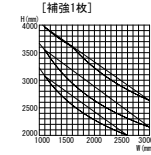
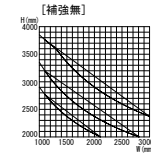
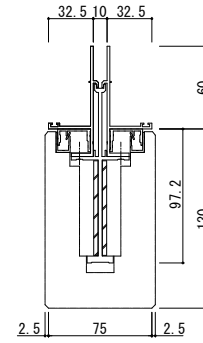
●可動窓/可動窓



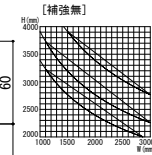
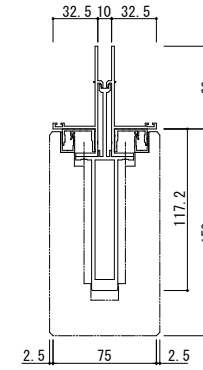
●FIX窓/片開きドア



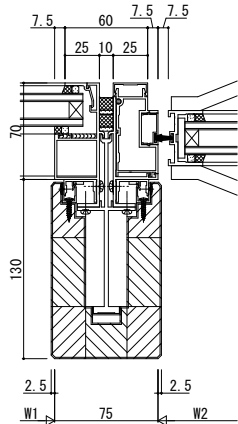
●Cタイプ



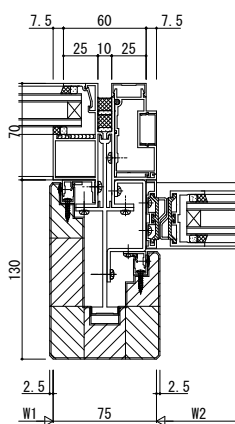
●Dタイプ



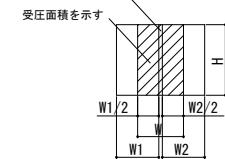
●FIX窓/自由開きドア



●FIX窓/自動ドア [片引き(戸先)]



耐風圧性
① 800Pa ② 1200Pa ③ 1600Pa
方立を示す



◆方立強度表<設定条件>
たわみ量・・・H/100かつ3cm以下
短期許容曲応力：1100kgf/cm²以下

変更記事	設計監理	工事名	照査	担当	作図	尺度	御承認印	図番
	施工							
		SYSTEMA31e【木化粧仕様】方立バリエーション・強度表				1/1		
		方立バリエーション・強度表						

