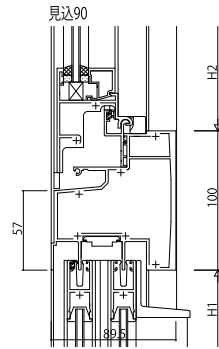
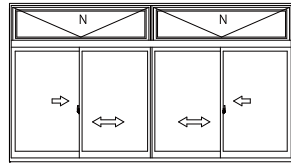
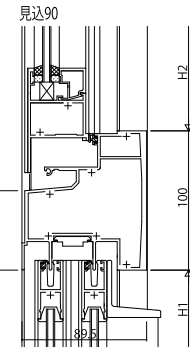
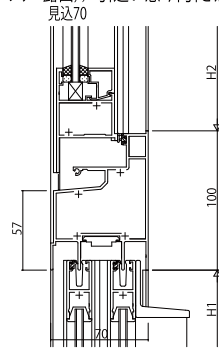
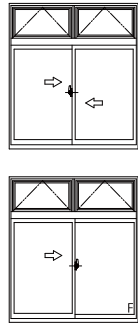


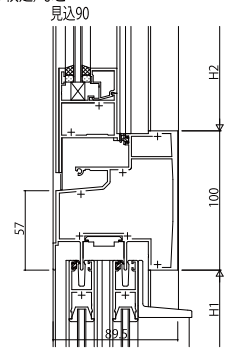
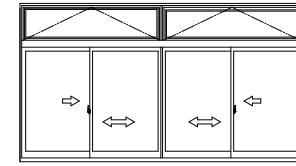
(9)内倒し窓/引違い窓(4枚建)など



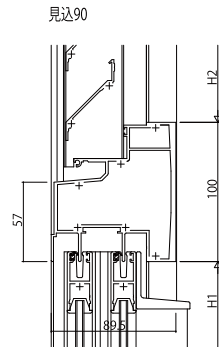
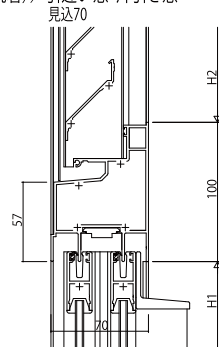
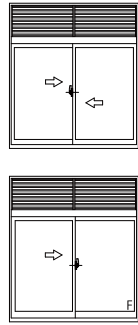
(10)突出し窓(カムラッチ・露出)/引違い窓・片引き窓



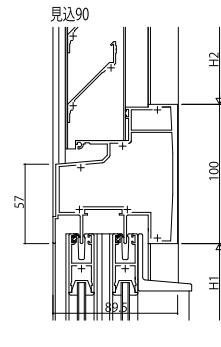
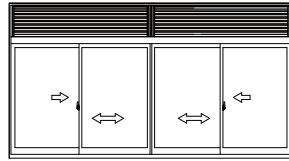
(11)突出し窓(カムラッチ・露出)/引違い窓(4枚建)など



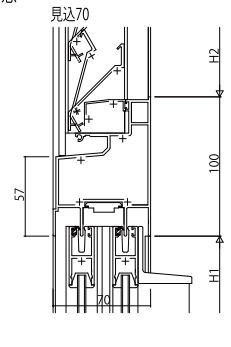
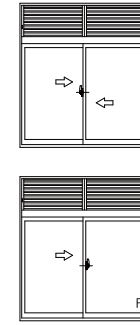
(12)固定がらり(非脱着)/引違い窓・片引き窓



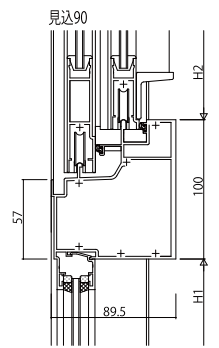
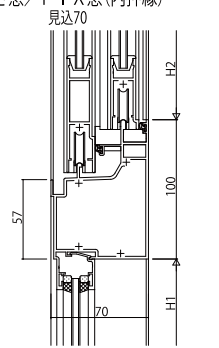
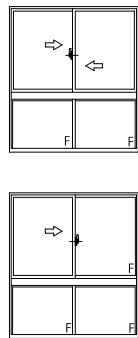
(13)固定がらり(非脱着)/引違い窓(4枚建)など



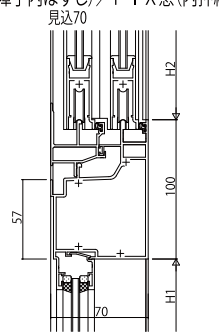
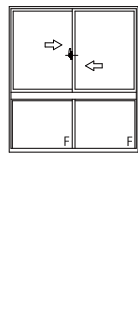
(14)アルミルーバー窓/引違い窓・片引き窓



(15)引違い窓・片引き窓/FIX窓(内押縁)



(16)引違い窓(内外障子内はずし)/FIX窓(内押縁)



変更記事	設計監理

	工事名	
	図面内容	EXIMA31 段窓無目 (9)~(16)

照査	担当	作図	尺度	御承認印
			1/1	
				年月日

図番	
通し図番	

