

引違い窓(2枚建)/引違い窓(2枚建)

FIX窓(内押縁)/引違い窓(2枚建)

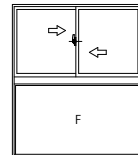
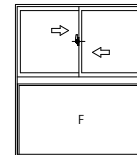
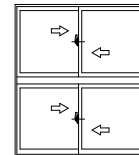
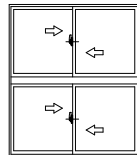
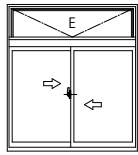
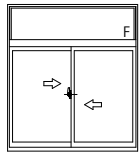
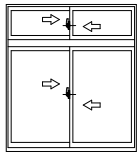
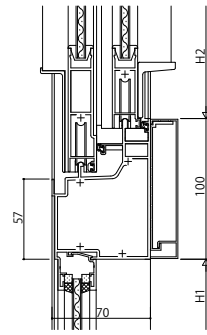
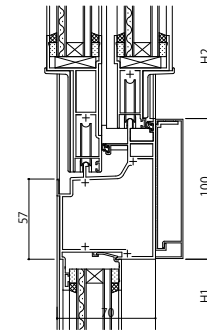
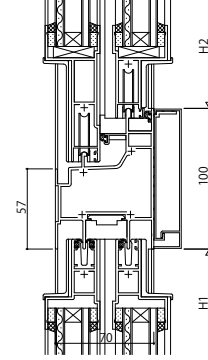
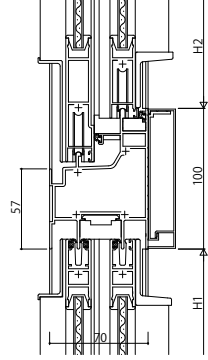
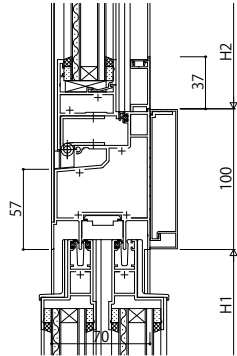
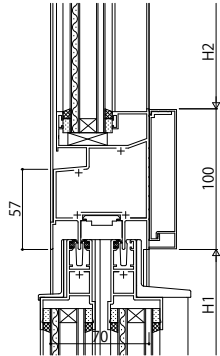
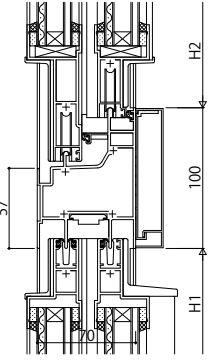
外倒し窓(排煙・隠ぺい)/引違い窓(2枚建)

引違い窓(2枚建)/引違い窓(2枚建)  
単板ガラス仕様

引違い窓(2枚建)/引違い窓(2枚建)  
複層ガラス仕様 35mm溝幅

引違い窓(2枚建)/FIX窓(内押縁)  
複層ガラス仕様

引違い窓(2枚建)/FIX窓(内押縁)  
単板ガラス仕様



FIX窓(内押縁)/FIX窓(内押縁)

外倒し窓(排煙・隠ぺい)/FIX窓(内押縁)

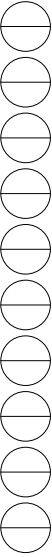
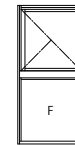
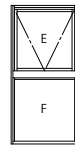
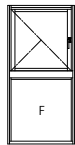
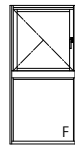
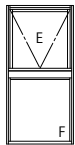
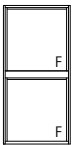
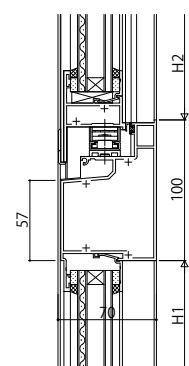
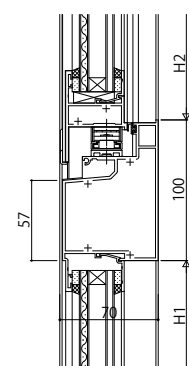
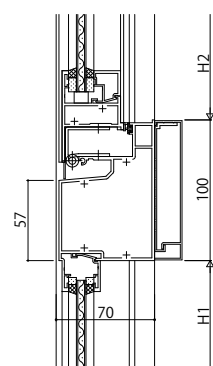
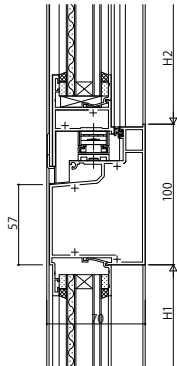
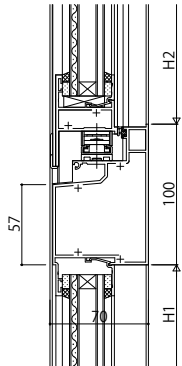
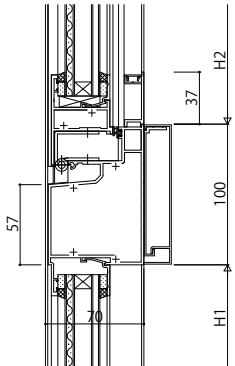
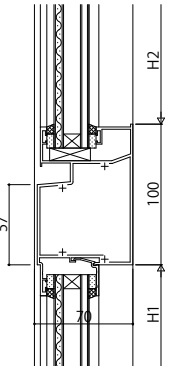
たてすべり出し窓/FIX窓(内押縁)

たてすべり出し窓【非常用進入口仕様・  
換気付非常用進入口仕様】/FIX窓(内押縁)

外倒し窓【排煙窓・露出オペレーター仕様】/  
FIX窓【内押縁タイプ】 単板ガラス仕様

たてすべり出し窓/  
FIX窓【内押縁タイプ】 複層ガラス仕様

たてすべり出し窓【非常用進入口仕様・換気付非常用進入口仕様】/  
FIX窓【内押縁タイプ】 複層ガラス仕様



変更記事	設計監理	工事名	照査	担当	作図	尺度	御承認印	図番
	施工	図面内容				1/1		年月日
		【大臣認定防火設備(個別認定)】BGE31						通し図番
		段窓無目						

殿

工事

YKK  
ap