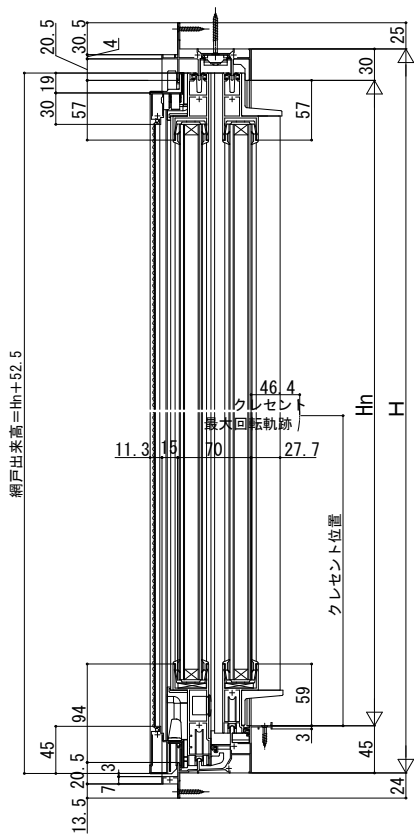
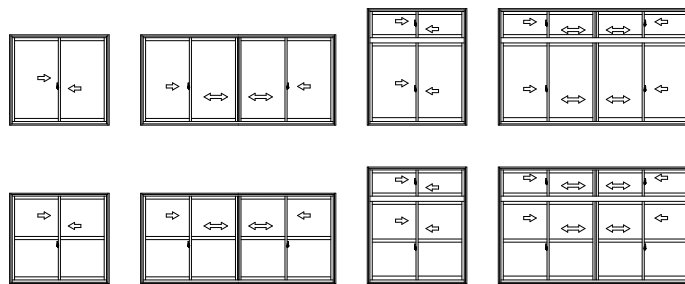


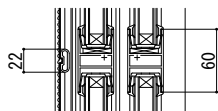
■断面図 Bタイプ

複層ガラス

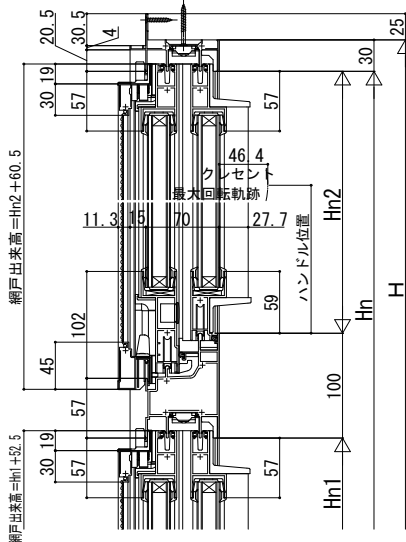
内観姿図



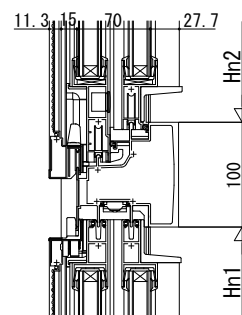
●中棧



●ランマ部

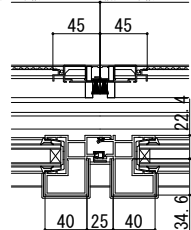


●9尺用無目



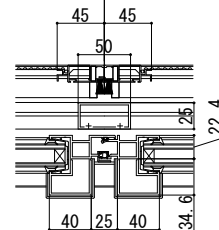
●4枚建突合せ部

網戸出来幅 =  $Wn/4 + 9$  , 網戸出来幅 =  $Wn/4 + 9$



● $Wn > 2,700$ のときランマ部 (吊束付)

網戸出来幅 =  $Wn/4 + 9$  , 網戸出来幅 =  $Wn/4 + 9$



●Aタイプ・ランマ部

