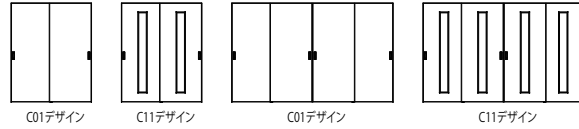
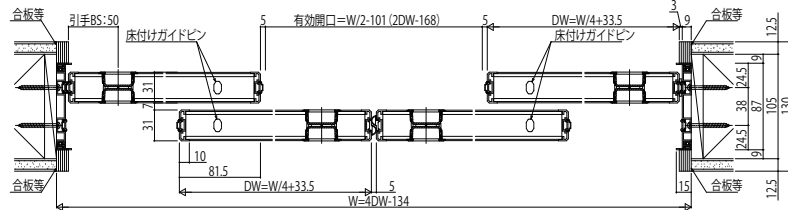
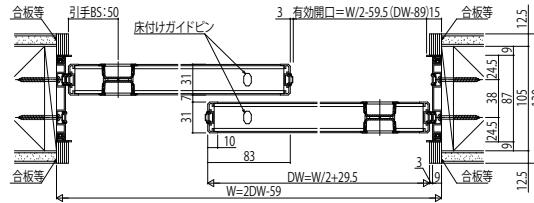
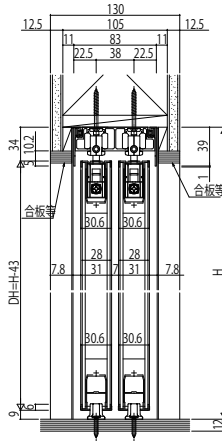


■室内引戸／収納引戸 引違い戸(2・4枚建) 上吊り

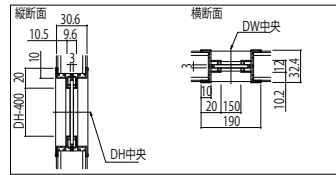
姿図



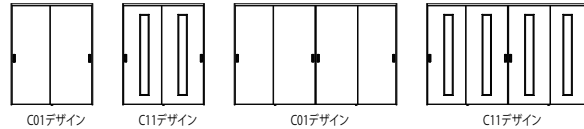
●三方枠埋め込みの場合
(内装仕上げ材の施工前に枠を取り付ける)



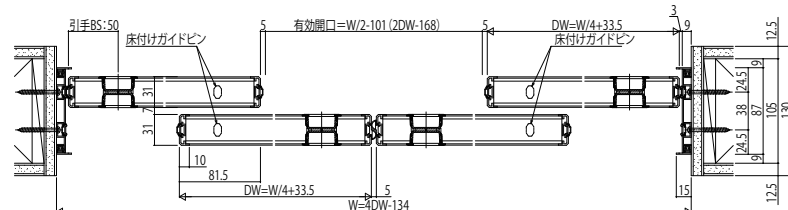
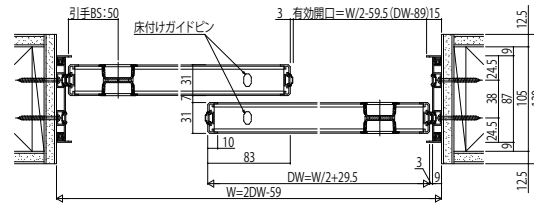
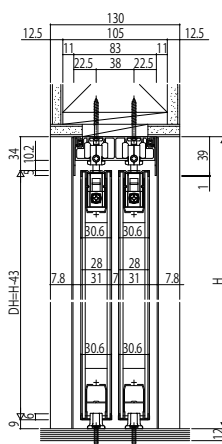
C11デザイン 採光部寸法



姿図



●三方枠後付けの場合
(内装仕上げ材の施工後に枠を取り付ける)



C11デザイン 採光部寸法

